

VA7ARE
SOP Document
Station # 2 – “HF Radio / Pactor”

REVISION HISTORY

Rev:	Date:	Changes By:	Comments:
0	November 12, 2023	VE7GCT	Initial document for review
1	Nov 12	VE7GCT	update remote changes to radio section
2			

Introduction:

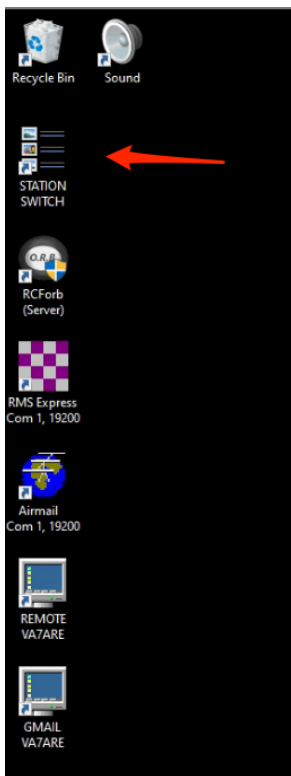
This station can be configured to operate in three modes; HF Pactor, HF radio (Sideband, AM and CW) and Remote Radio.

This document will describe how the station should be configured for each of these modes.

Station Switch:

A hardware / software solution has been installed to provide for the remote operation of the HF radio. It is important that this switch be in the correct position for each operation, otherwise the function may fail to work properly.

To access the switch, click on the “Station Switch” icon on monitor 1 (left side).



Then click on the "Control" option.








The login and password are:
admin
Ridgeradio

Note that only the top switch is used.

[Control](#) | [Edit](#) | [Setting](#)

Control

NAME					
D = ON V = OFF		ON	OFF	DELAY	
N/C		ON	OFF	DELAY	
N/C		ON	OFF	DELAY	
N/C		ON	OFF	DELAY	
N/C		ON	OFF	DELAY	
N/C		ON	OFF	DELAY	
N/C		ON	OFF	DELAY	
N/C		ON	OFF	DELAY	

A red arrow points to the lightbulb icon in the first row of the table.

If the indicator light is “on” then the switch is in the “data” mode.
If the indicator light is “off”, then the switch is in the “voice” mode.

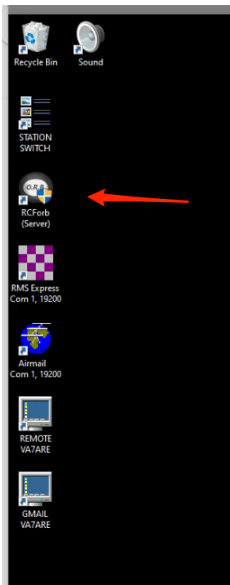
Select “on” for data and “off” for voice.
Close the window.

RCForb Server Information

This station is equipped to provide for remote connection to the radio which allows the operation of the radio as if you were physically there. The station can only be accessed by a licensed Amateur radio operator using the RCForb client software. Frequency and operating modes are restricted to those allowed by the operator’s license. The operator must be on the approved list which is controlled by the VA7ARE station operator.

With reference to Step 2 below, to start the RCForb server, do the following:

Double click on the RCForb server icon located on the left side of Monitor #1.



Answer “Yes” to the prompt. You should see a screen appear with several commands appearing. When this is finished, you are done. To close the server, just click on the “x” in the top right corner of the server window.

Remote changes to the HF Radio

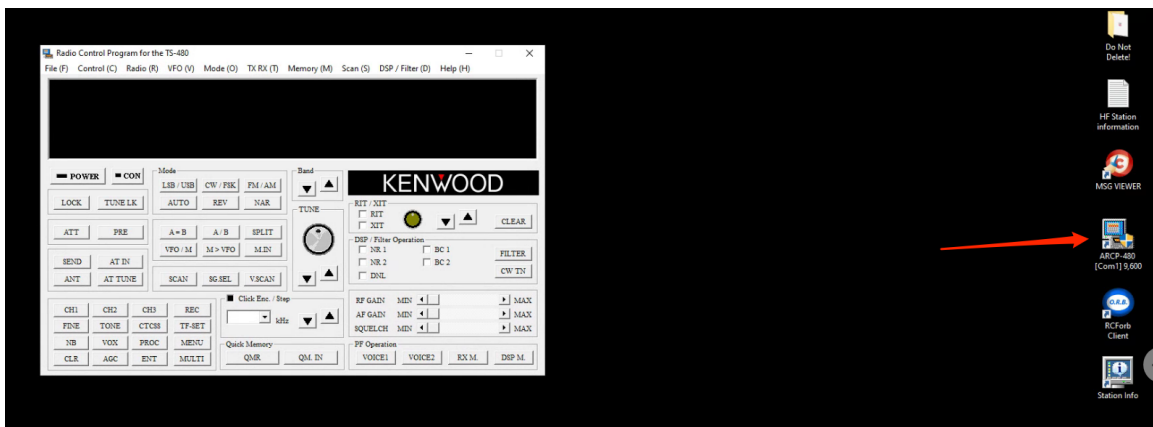
When following Step 2 below:

To make adjustments to the Kenwood TS480, follow this procedure:

1. Close packet P2P session.
2. Click on the "ARCP-480" icon. Located on the right side of the monitor. This will bring up the radio control software.

Make changes as necessary. Operate the radio. When done, ensure that you leave the radio power ON.

3. Click on the "x", top right, to close the window.
4. Proceed to Step 1 below.



Station Operating Modes

NOTE: The DEFAULT operating mode is Winlink Express with P2P Pactor session open. Please ensure that the station is in this mode before you disconnect your session.

Step 1, Station 2 - HF: Station settings when leaving Physically or Remotely Winlink Express & P2P Pactor session open .

1. Open Station Switch, make sure it is set to DATA (Light ON)
2. Close RCForb Server right mouse and click EXIT
3. Start Winlink Express and Open the P2P packet station (initialized ok)

Step 2, Station 2 - HF: Operating VOICE Remote

1. Open Station Switch, it should be set to VOICE (Light OFF)
2. Close the P2P Session only (Winlink main window can be left on)
3. Start RCForb Server (check the task bar by the clock for the icon)

Start your RCForb Client and connect to VA7ARE and enjoy.

When finished complete Step 1

Step 3, Station 2 - HF: Operating DATA Remote

1. Open Station Switch, set to DATA (Light ON)
2. Close RCForb Server for proper operation, it must be closed (check the task bar by the clock).
3. Start Winlink Express and Open the P2P packet station (initialized ok).

/eof